

# patterns of cultural creative processes

Yong-Yeol Ahn, Shikun Ding, Luit Saikia. IU Computer Science

## Introduction

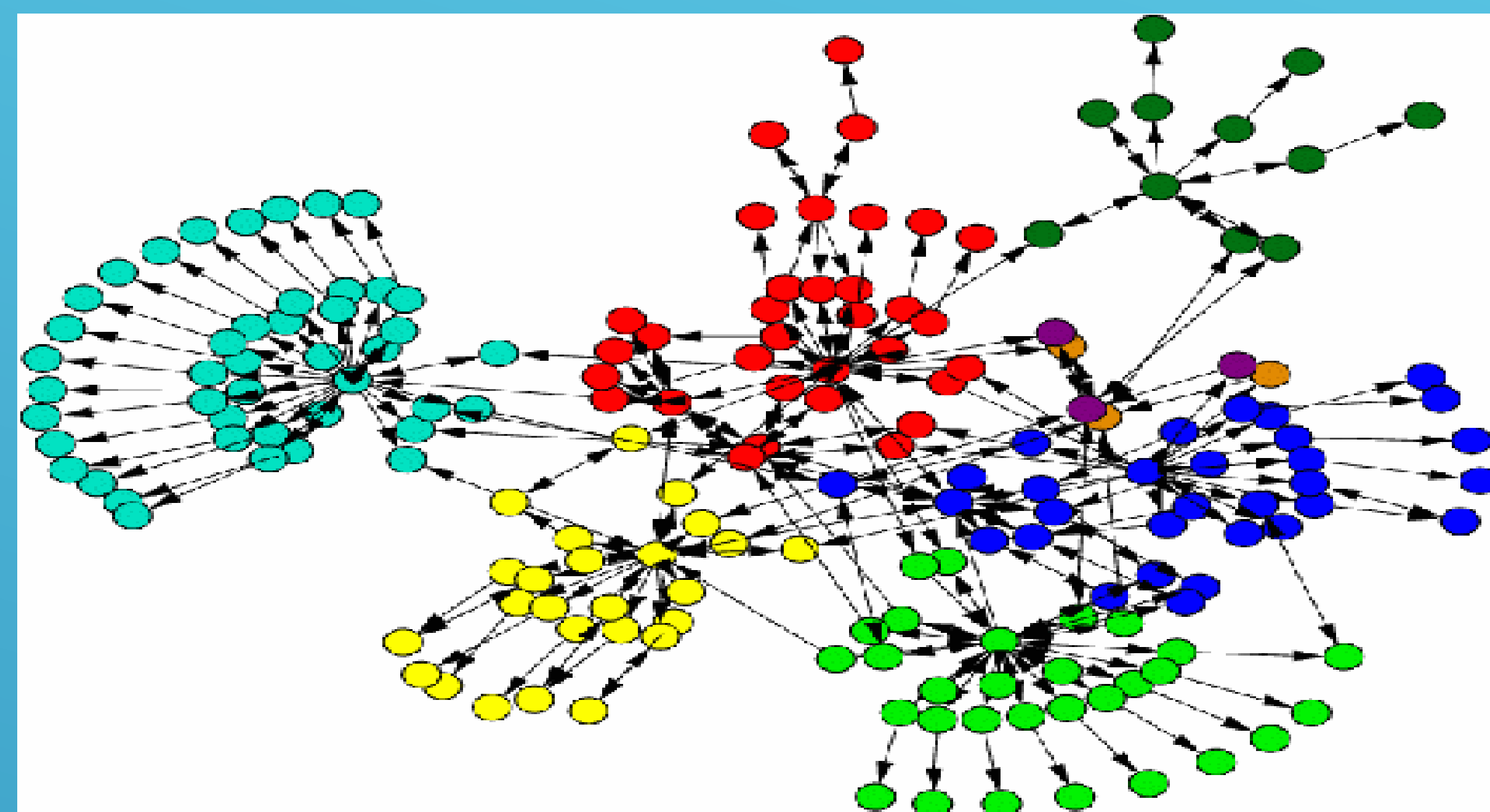
This project aims to understand the patterns of human creation by constructing and analyzing the complex networks of collaborations, creations and citation of cultural product. In this case, we collect and analyze data from whoSampled website. (<http://www.whosampled.com/>).

## Motivation

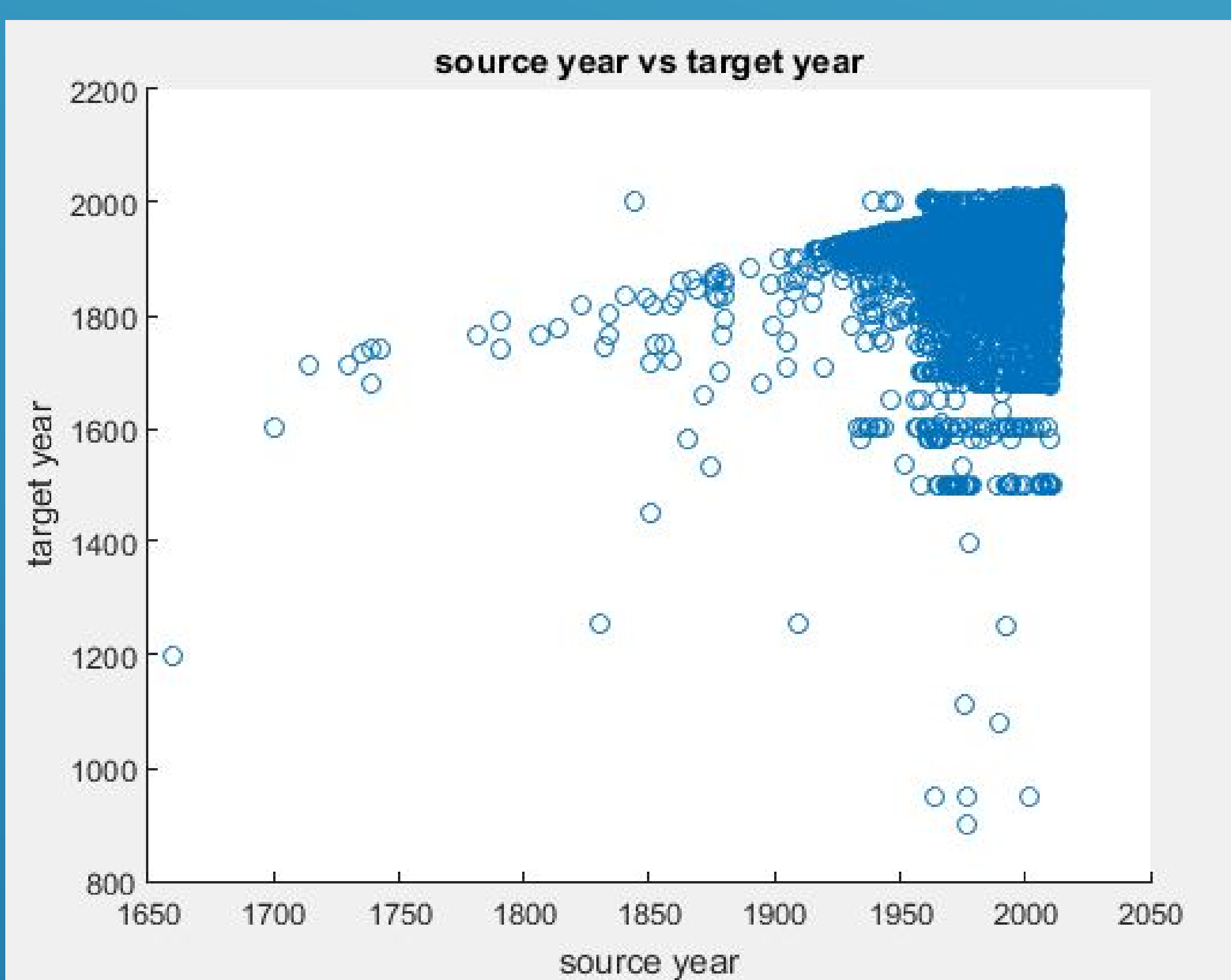
How songs are connected?  
How citation work in music area?  
What is complex network?

## Data we extract

	A	B	C	D
	id	fromSamUrl	samSongNa...	url
	NUMBER	TEXT	TEXT	TEXT
1	id	fromSamUrl	samSongNa...	url
2	1	<a href="http://www...">http://www...</a>	Glory Box	<a href="http://www...">http://www...</a>
3	2	<a href="http://www...">http://www...</a>	Here	<a href="http://www...">http://www...</a>
4	3	<a href="http://www...">http://www...</a>	Hell Is Rou...	<a href="http://www...">http://www...</a>
5	4	<a href="http://www...">http://www...</a>	Let Me Go	<a href="http://www...">http://www...</a>
6	5	<a href="http://www...">http://www...</a>	Jorge Da C...	<a href="http://www...">http://www...</a>
7	6	<a href="http://www...">http://www...</a>	Sentado en...	<a href="http://www...">http://www...</a>
8	7	<a href="http://www...">http://www...</a>	Salve	<a href="http://www...">http://www...</a>

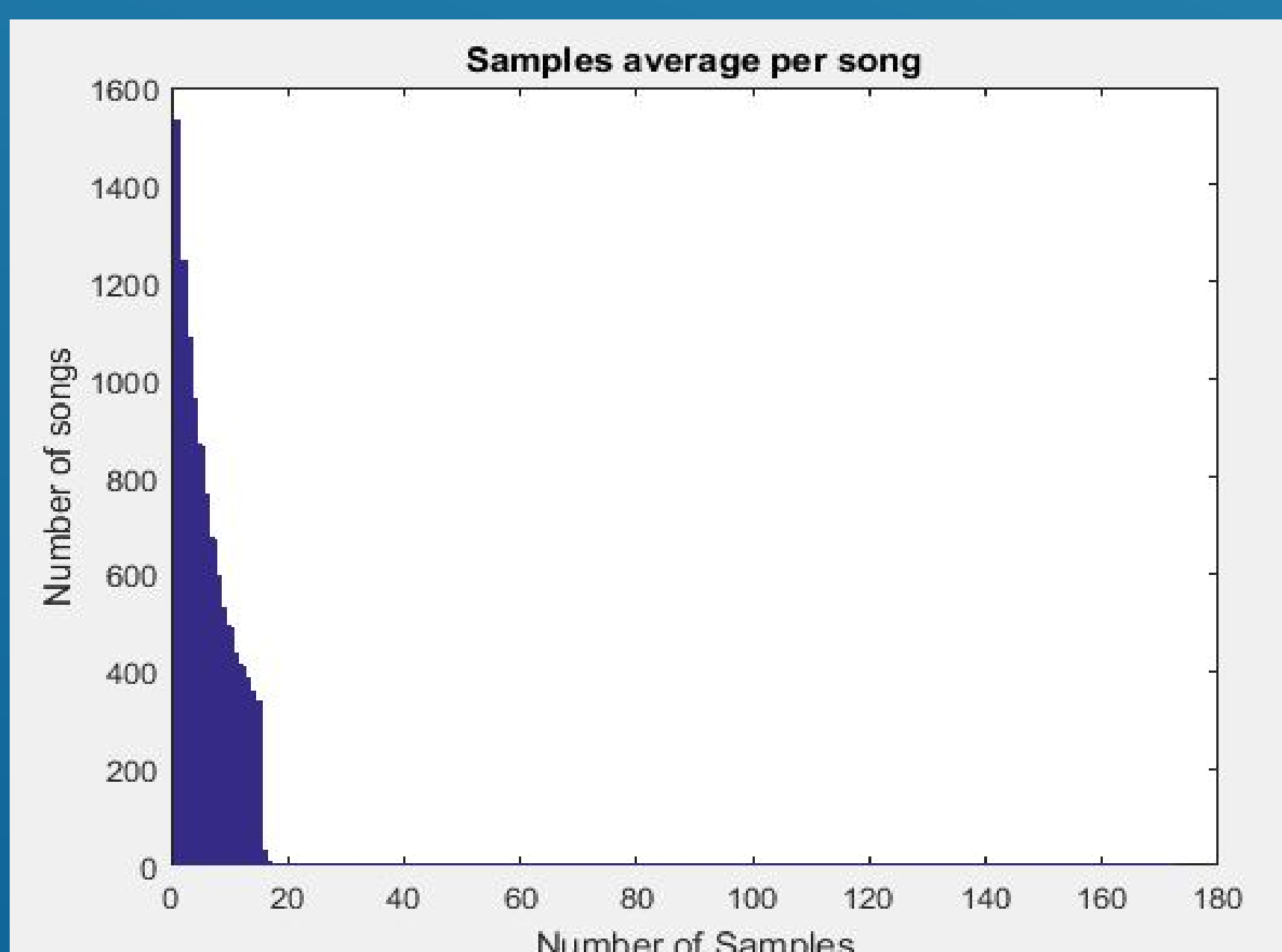


Nodes are songs that are connected by edges.  
Edges are relations such as samples/covers/similarities.

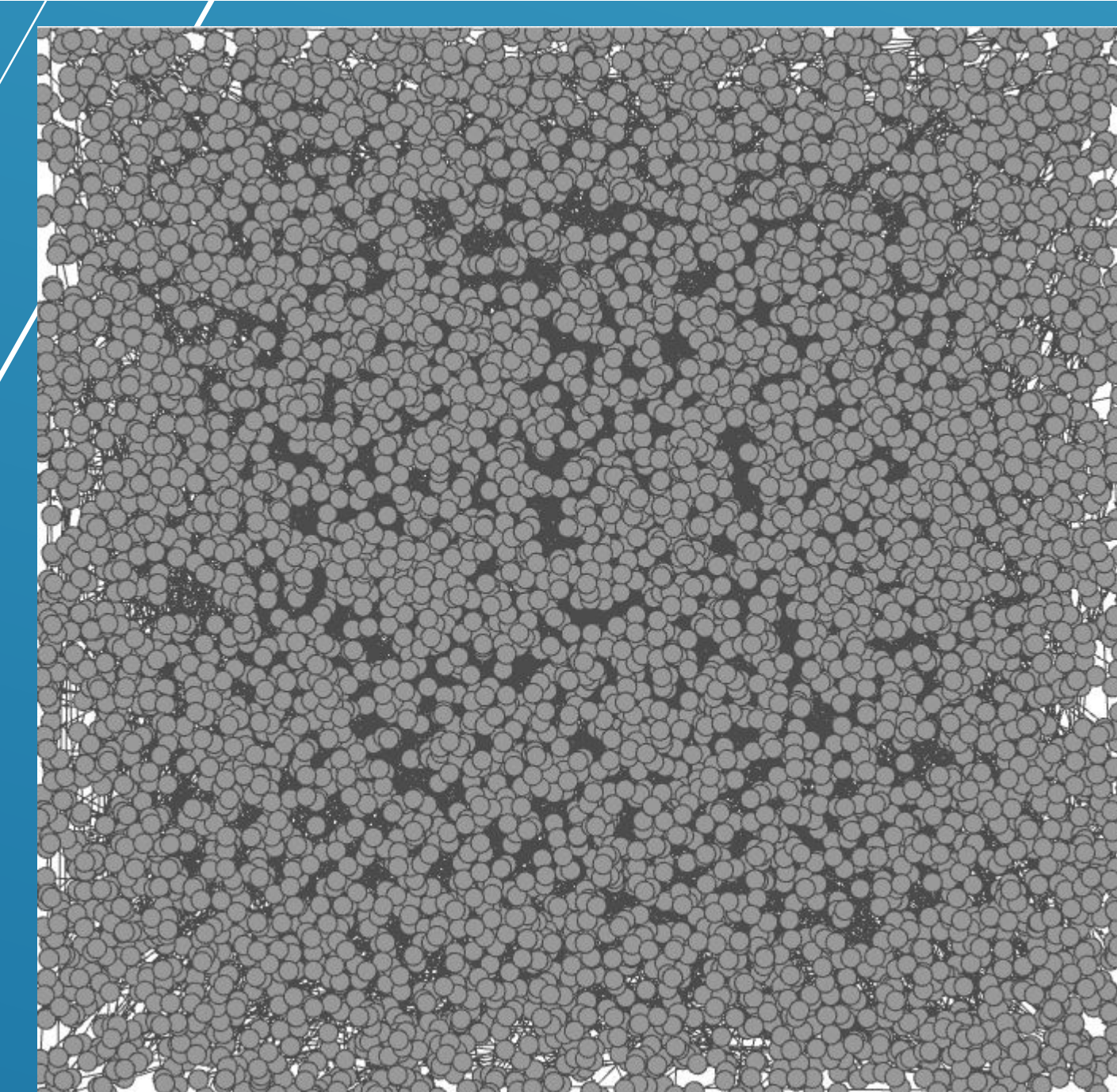
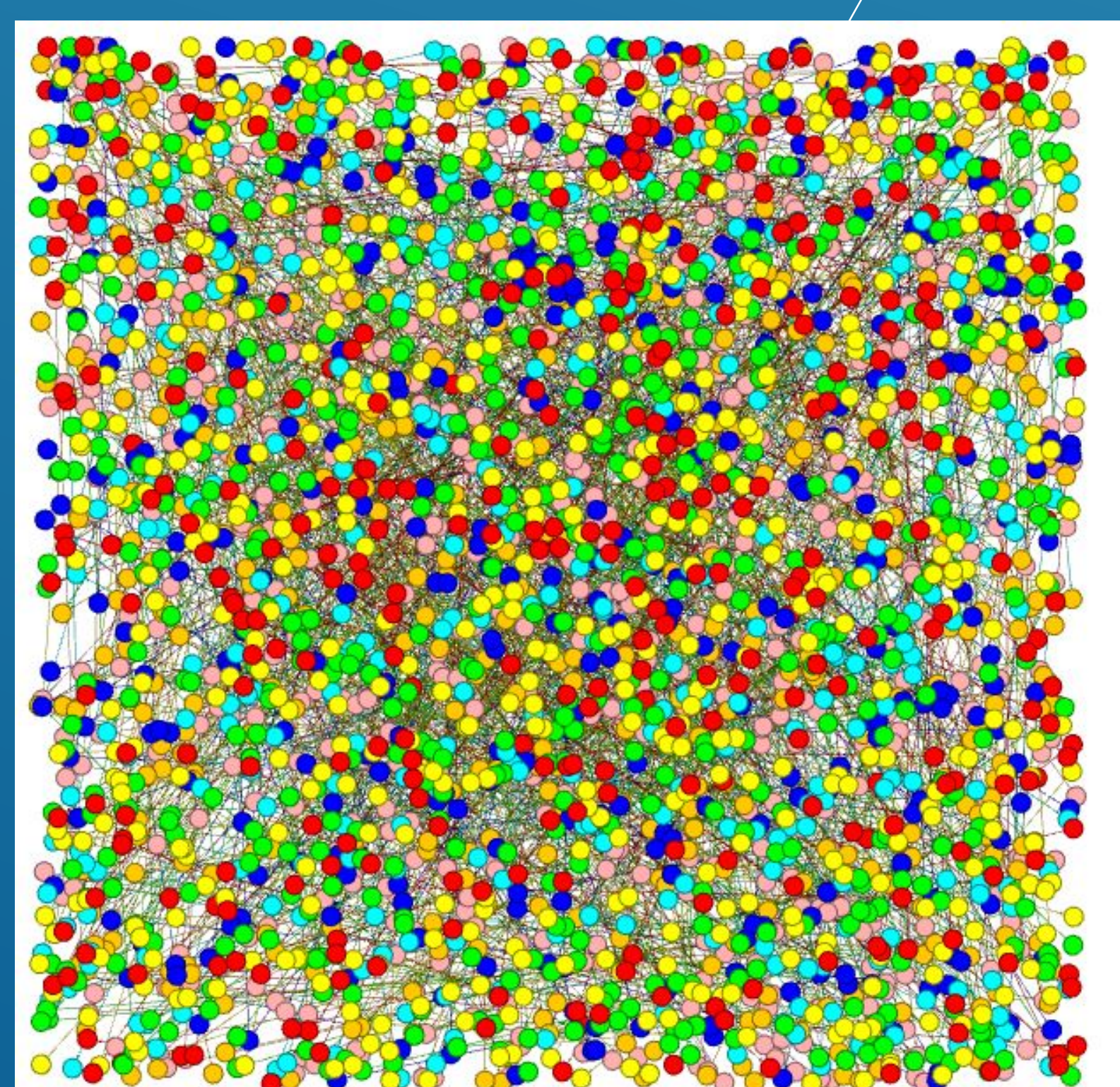


Average source year:1996.5  
Average target year:1978.4

## Samples Graphs



Samples Degree Distribution  
Average samples per song:  
7.0803



Future work  
More data analyze about what type of songs are more likely to be sampled than others.